



artstone®

THE ART OF  
COVERINGS

INSPIRE, DESIGN AND NATURE...

THE  
INNOVATIVE  
FACE OF  
DESIGN





artstone®

artstone

artstone®

Istanbul Showroom

Becoming operational in 2005 as a pioneer and innovative brand of decorative wall panels, Artstone Inc. carries the understanding and vision of decoration to a different area and allows creative solutions inspired by the nature in all spaces.

It forges ahead to be the representative of quality and trust as a successful business partner of project solutions, operating locally and abroad with its young, dynamic and visionary team.

“Artstone Decorative Wall Panels”, designed and produced in Turkey, is the brand that does not keep up with the fashion but creates the fashion with its own line and unique models.



## INNOVATIVE ART

DUSK	10
CURIO	12
WAVY	15
CHOPPY	16
NUKKS	18
W-PLATE	20
SUGI-BAN	23
BOHEMIA	24
VEDTRA	26
TRAPE	28
3ANGLE	30
LAMBRIS	33
CORK QUERCUS	34
CORK OAK	36
KORS	38
TRÅD	39
RUINA VINTAGE	40
RUINA	42
MASONRY MOSS	44
BAOBAB MOSS	47
AMAZON	48
TIMBER	50
MAYON	52
HORMIGON VINTAGE	54
ZANZIBAR	56
HORMIGON PLUS OXIDO	60
TORNILLO OXIDO	62
WOOD BARBADOS	65
ROCA	68
TAYGA	72
SPECTRA	73
TOCHO	74
MAGMA	76

## STEEL

G QUBE	80
BOLTS	81
FORG	82
WOXX	83
ROOTZ	84
WELD XIX	85

## CONCRETE

T-ROD PLATE	88
H-PLATE	90
H-RECTA	92
HORMIGON 3D	94
HORMIGON	96
HORMIGON LOFT	98
HORMIGON PLUS	100

## BRICK

PERFORADO XXI	104
HERITAGE PERFORADO	106
HERITAGE XVII	108
HERITAGE XVIII	110
HERITAGE XIX	112
HERITAGE LOFT	114
LADRILLO LOFT CURE	117
LADRILLO MASONRY	118
LADRILLO	120
LADRILLO LOFT	122
LADRILLO VINTAGE	126
LADRILLO PERFORADO	128
LADRILLO BRECON	130

## STONE

SURIN SLATE	134
KARON SLATE	136
BRUDT	138
JAKARTA	140

PICADA VINTAGE	142
PIZARRA	144
FIJI	146
LASCAS	148
LAJAS	150
PICADA	152
RUSTICA	154
PRENAICA	156
LASTRA	158
SILLAREJO	160

## REFERENCES

	162
--	-----

## KAROART

MARGAUX	182
ARIETTA	184
BOIS	188
VERMONT	189
DAISY	192
BRODERIE	194
EPICURE	195
VERSAILLES	198
GRENIER	200
PLAFONT	204
FLORENZ	206
FONTENAY	207
VICTORIAN	208

## PRODUCT ADVANTAGES

	210
--	-----

## SPECIFICATIONS

	212
--	-----

## INSTALLATION

	213
--	-----

## OUR DIFFERENCES

	214
--	-----

## ARTSTONE AT A GLANCE

	218
--	-----

## PROJECT APPROACH

	220
--	-----

## SERVICE NETWORK

	221
--	-----

## INTERNATIONAL PORTFOLIO

	222
--	-----







INNOVATIVE ART

# DUSK



h: 270 cm  
↑  
w: 102 cm  
→



Grey | A-101-07



Eternity | A-103



Sage | A-104



Taupe | A-105



# CURIO



Apron | A-135



Grey | A-131-07



Eternity | A-133



Intenso | A-132

h: 269 cm  
w: 101 cm





# WAVY



h: 269 cm  
w: 111 cm



Crudo | A-151-02



Dusty | A-157



Grey | A-151-07



Seta | A-158

# CHOPPY



h: 273 cm  
w: 103 cm



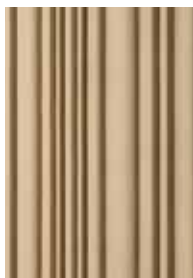
Cream | A-171-13



Grey | A-171-07



Rape | A-176



Seta | A-178



Terrosa | A-179





# NUKKS



h: 269 cm



w: 101 cm



Clay | A-212



Cream | A-201-13



Grey | A-201-07



Rape | A-211



Terrosa | A-209



# W-PLATE



Apron | A-225



Crudo | A-221-02



Seta | A-228

h: 281 cm  
w: 126 cm

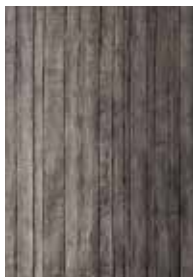




# SUG-BAN



h: 298 cm  
w: 130 cm



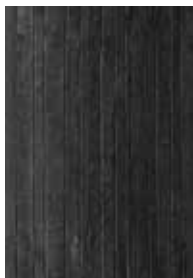
Basalto | A-672



Blanca | A-671-01



Earth | A-673



Negra | A-671-11



Silver Black | A-674

# BOHEMIA



Earth | A-842

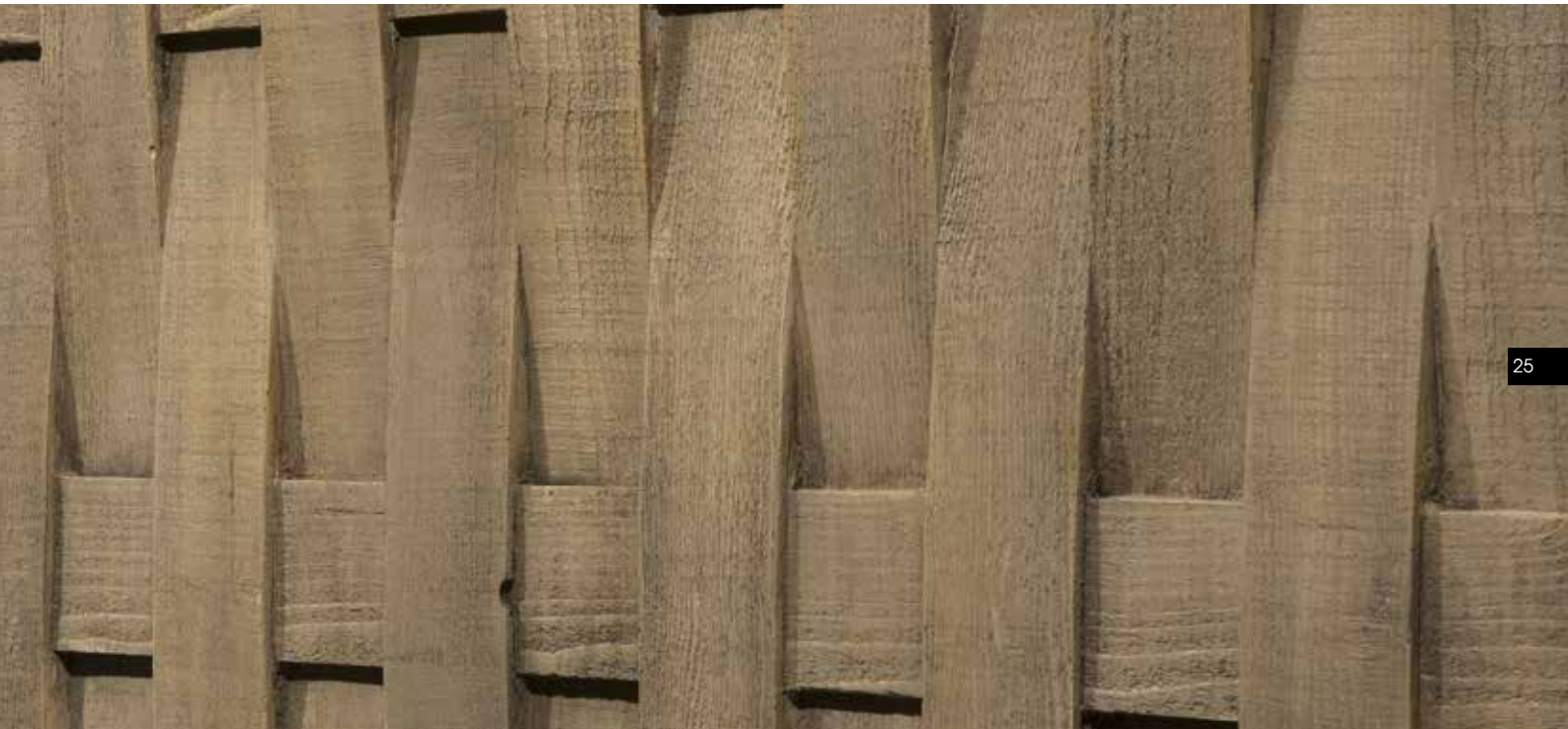


Natura | A-843

h: 297 cm  
w: 125 cm







# VEDTRA



h: 124 cm  
w: 299 cm

26



Basalto | A-693



Blanca | A-691-01



Cobriza | A-694



Earth | A-695



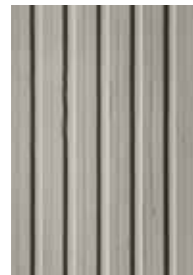
# TRAPE



Basalto | A-613



Blanca | A-611-01



Grey | A-611-07

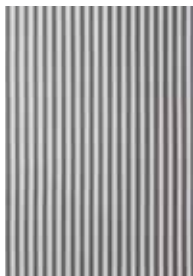
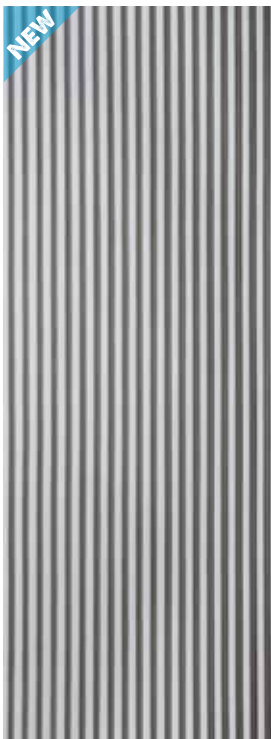


Oxido | A-612

h: 301 cm  
w: 119 cm



# 3ANGLE



Grey | A-771-07



Dark Grey | A-773



Mocha | A-771-05

h: 280 cm  
w: 102 cm







# LAMBRIS



h: 299 cm  
w: 120 cm



Basalto | A-685



Carmin | A-684



Earth | A-683



Natura | A-682

# CORK QUERCUS



**h:** 120 cm  
**w:** 270 cm

34



Cobrizo | A-782



Faon Blanc | A-784



Ocre | A-783



# CORK OAK



**h:** 120 cm  
**w:** 270 cm

36



Blanca | A-791-01



Earth | A-792



Polo Earth | A-793



# KORS



**h:** 117 cm  
**w:** 278 cm

38



Basalto | A-633



Cobrizo | A-634



Earth | A-635

# TRÄD



h: 109 cm  
w: 280 cm



Basalto | A-664



Cobrizo | A-663



Ocre | A-665

# RUINA VINTAGE



h: 109 cm



w: 279 cm

40



Ocre | A-642



Carmin | A-643





# RUINA



h: 127 cm  
w: 296 cm

42



Arce | A-304



Carmin | A-305



Gris | A-303



Ocre | A-302



# MASONRY MOSS



**h:** 131 cm



**w:** 278 cm

A-602







# BAOBAB MOSS



h: 130 cm  
w: 300 cm

A-622



# AMAZON



h: 130 cm  
w: 301 cm

48



Blanca | A-311-01



Earth | A-313



Natura | A-312





# TIMBER



h: 109 cm  
w: 281 cm

50



Basalto | A-445



Carmin | A-444



Cobriza | A-443



Natura | A-442



# MAYON



h: 132 cm



w: 115 cm

52



Carmin | A-404



Cobriza | A-402



Intenso | A-403



# HORMIGON VINTAGE



h: 126 cm  
w: 296 cm

54



Multicolor | A-365



Natura | A-362



Rojo | A-363



Triamel | A-364



# ZANZIBAR



h: 128 cm



w: 296 cm

56



Anthracite | A-351-10



Blanca | A-351-01



Carmin | A-353



Earth | A-354



Intenso | A-352









# HORMIGON PLUS OXIDO



h: 134 cm



w: 299 cm

60

A-372





# TORNILLO OXIDO



h: 131 cm



w: 296 cm

A-376









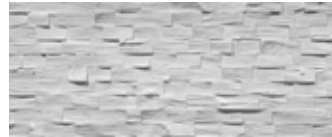
# WOOD BARBADOS



h: 130 cm  
w: 297 cm



Basalto | A-383



Blanca | A-381-01



Cobriza | A-385



Earth | A-386





# ROCA



h: 127 cm



w: 297 cm

68



Basalto | A-244



Blanca | A-241-01



Cobriza | A-246



Natura | A-242



Negra | A-241-11



Triamel | A-245





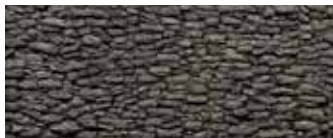


# TAYGA



h: 131 cm  
w: 296 cm

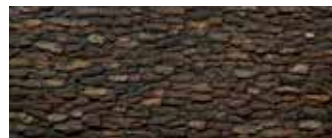
72



Basalto | A-473



Cobrizo | A-474



Natura | A-472



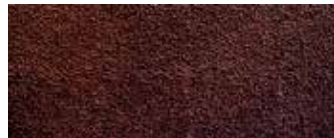
# SPECTRA



h: 120 cm  
↑  
w: 290 cm  
→



Anthracite | A-411-10



Carmin | A-414



Earth | A-412



Triamel | A-413

# TOCHO



h: 132 cm  
↑  
w: 299 cm  
→

74



Cobrizo | A-483



Earth | A-484



Natura | A-482



# MAGMA



h: 130 cm



w: 297 cm

76



Anthracite | A-421-10



Basalto | A-422



Blanca | A-421-01



Carmin | A-424



Earth | A-425



Triamel | A-423







STEEL

# G QUBE



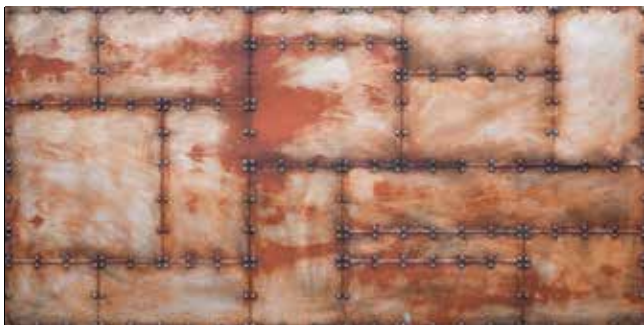
h: 129 cm  
w: 259 cm

SI-701





# BOLTS



ST-731

h: 129 cm  
w: 259 cm



# FORG



h: 128 cm



w: 259 cm

82

SI-721



WOXX



SI-751

h: 128 cm  
w: 258 cm



# ROOTZ



h: 129 cm  
w: 259 cm

ST-741



# WELD XIX



ST-711

h: 130 cm  
w: 259 cm







CONCRETE

# T-ROD PLATE

NEW



h: 125 cm  
w: 299 cm

88



Grey | C-921-07



Dark Grey | C-923



Intenso | C-922





# H-PLATE



**h:** 110 cm



**w:** 280 cm

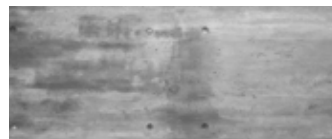
90



Grey | C-911-07



Anthracite | C-911-10



Intenso | C-912



Fonce | C-914



Terrosa | C-915



# H-RECTA



h: 120 cm  
w: 238 cm

92



Grey | C-901-07



Anthracite | C-901-10



Intenso | C-902



Natura | C-904



Fonce | C-905



Tosca | C-906



# HORMIGON 3D



**h:** 130 cm



**w:** 298 cm

94



Anthracite | C-501-10



Grey | C-501-07



Intenso | C-503



# HORMIGON



h: 133 cm  
w: 300 cm

96



Anthracite | C-101-10



Blanca | C-101-01



Grey | C-101-07



Intenso | C-102



Triamel | C-103





# HORMIGON LOFT



h: 127 cm  
w: 298 cm

98



Grey | C-331-07



Anthracite | C-331-10



Intenso | C-332



Triamel | C-333



Natura | C-336



# HORMIGON PLUS



**h:** 134 cm  
**w:** 299 cm

100



Anthracite | C-111-10



Blanca | C-111-01



Grey | C-111-07



Intenso | C-112



Triamel | C-113







BRICK

# PERFORADO XXI



h: 123 cm



w: 290 cm

104



Blanca | B-761-01



Grey | B-761-07



Polo | B-764



Rojo | B-762





# HERITAGE PERFORADO



h: 123 cm



w: 290 cm

106



Blanca | B-861-01



Eclectic | B-862



Rojo | B-863



Rojo Blanca | B-864



# HERITAGE XVII



h: 116 cm  
w: 292 cm

108



Blanca | B-531-01



Earth Blanca | B-536



Grey Dark | B-537



Multicolor Negra | B-535



Oxido | B-533



Rojo | B-532



# HERITAGE XVIII



h: 118 cm  
w: 301 cm

110



Blanca | B-541-01



Blanca Dark | B-547



Eclectic | B-544



Oxido | B-543



Rojo | B-542



# HERITAGE XIX



h: 131 cm  
w: 285 cm

112



Blanca | B-551-01



Earth | B-555



Rojo | B-552





# HERITAGE LOFT



h: 135 cm



w: 298 cm

114



Blanca | B-521-01



Polo Rojo | B-526



Rojo Polo | B-527



Rojo | B-522



Triamel | B-525





# LADRILLO LOFT CURE



h: 130 cm  
w: 303 cm



Blanca | B-561-01



Grey Dark | B-565



Rojo | B-562



Terrosa | B-566

# LADRILLO MASONRY

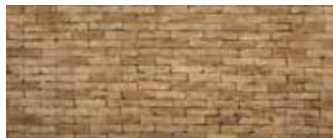


h: 131 cm  
w: 278 cm

118



Blanca | B-511-01



Earth | B-515



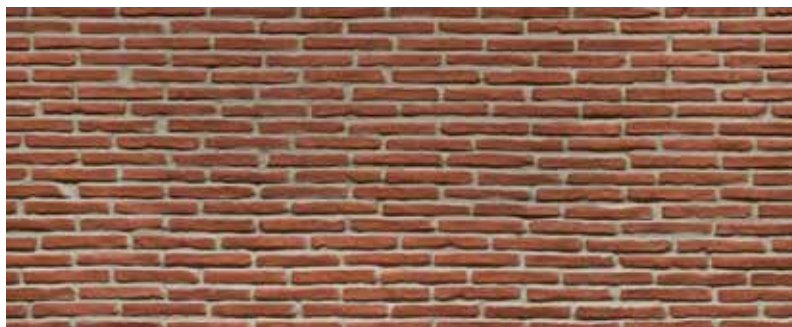
Intenso | B-513



Rojo | B-512



# LADRILLO

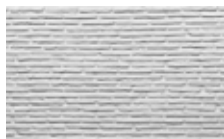


h: 130 cm  
w: 294 cm

120



Anthracite | B-201-10



Blanca | B-201-01



Claro | B-204



Multicolor | B-203



Polo Rojo | B-202-02



Rojo | B-202





# LADRILLO LOFT



h: 129 cm  
w: 305 cm

122



Anthracite | B-291-10



Basalto | B-293



Blanca | B-291-01



Eclectic | B-299



Polo Rojo | B-292-04



Rojo Efecto | B-292-02



Rojo | B-292







# LADRILLO VINTAGE



h: 127 cm



w: 298 cm

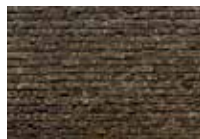
126



Anthracite | B-321-10



Blanca | B-321-01



Earth | B-325



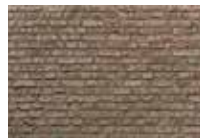
Eclectic | B-327



Multicolor | B-322



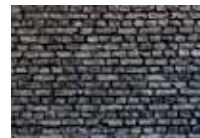
Polo | B-324



Polo Eclectic | B-324-02



Rojo | B-323



Triamel | B-326



PIQUE

# LADRILLO PERFORADO



h: 129 cm  
w: 299 cm

128



Anthracite | B-451-10



Blanca | B-451-01



Eclectic | B-453



Rojo | B-452





# LADRILLO BRECON



h: 133 cm



w: 304 cm

130



Anthracite | B-491-10



Blanca | B-491-01



Cobrizo | B-493



Rojo | B-492

# MAHZEN







# STONE

# SURIN SLATE



h: 129 cm



w: 299 cm

134



Cobriza | S-804



Earth | S-803



Gris | S-802



# KARON SLATE



**h:** 130 cm



**w:** 295 cm

136



Cobriza | S-813



Earth | S-814





# BRUDT



h: 121 cm



w: 227 cm

138

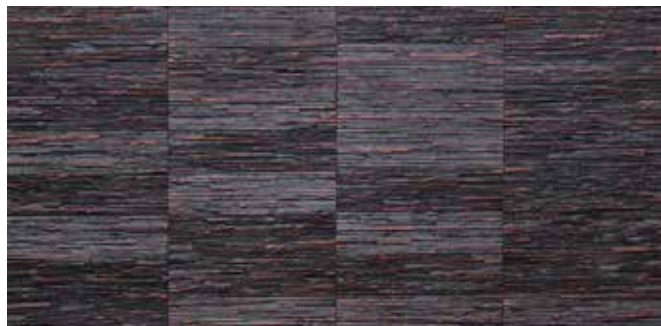
Triamel | S-654





atstone

# JAKARTA



h: 120 cm  
w: 238 cm

S-822

140



Blanca | S-821-01



Carmin | S-822



Fonce | S-824



Terrosa | S-823



# PICADA VINTAGE



**h:** 130 cm



**w:** 294 cm

142



Basalto | S-392



Cobrizal | S-393

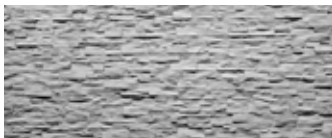


# PIZARRA



h: 137 cm  
w: 301 cm

144



Blanca | S-341-01



Cobriza | S-345



Intenso | S-342



Negra | S-341-11





# FIJI



h: 127 cm

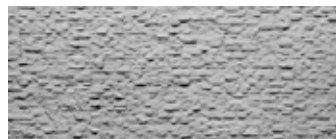


w: 296 cm

146



Basalto | S-463



Blanca | S-461-01



Earth | S-464



Negra | S-461-11



# LASCAS



h: 132 cm



w: 297 cm

148



Basalto | S-214



Blanca | S-211-01



Cobriza | S-216



Gris | S-213



Negra | S-211-11



Ocre | S-215



Terrosa | S-212



# LAJAS



h: 131 cm  
w: 302 cm

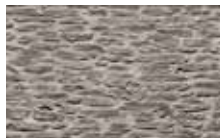
150



Basalto | S-224



Blanca | S-221-01



Gris | S-222



Ocre | S-223



# PICADA



h: 131 cm  
w: 301 cm

152



Blanca | S-121-01



Castellana | S-122



Gravel | S-125



Gris | S-126





# RUSTICA



h: 132 cm



w: 298 cm

154



Blanca | S-281-01



Castellana | S-282



Cobrizo | S-283

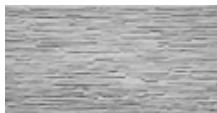


# PRENAICA



**h:** 132 cm  
**w:** 300 cm

156



Blanca | S-261-01



Carmin | S-266



Gris | S-262



Ocre | S-263



# LASTRA



h: 131 cm  
w: 298 cm

158



Blanca | S-141-01



Castellana | S-142



Cobrizo | S-144



# SILLAREJO



h: 130 cm  
w: 300 cm

160



Arce | S-275



Blanca | S-271-01



Cobrizo | S-273





# REFERENCES





# REFERENCES





# REFERENCES





# REFERENCES



168







# REFERENCES





# REFERENCES



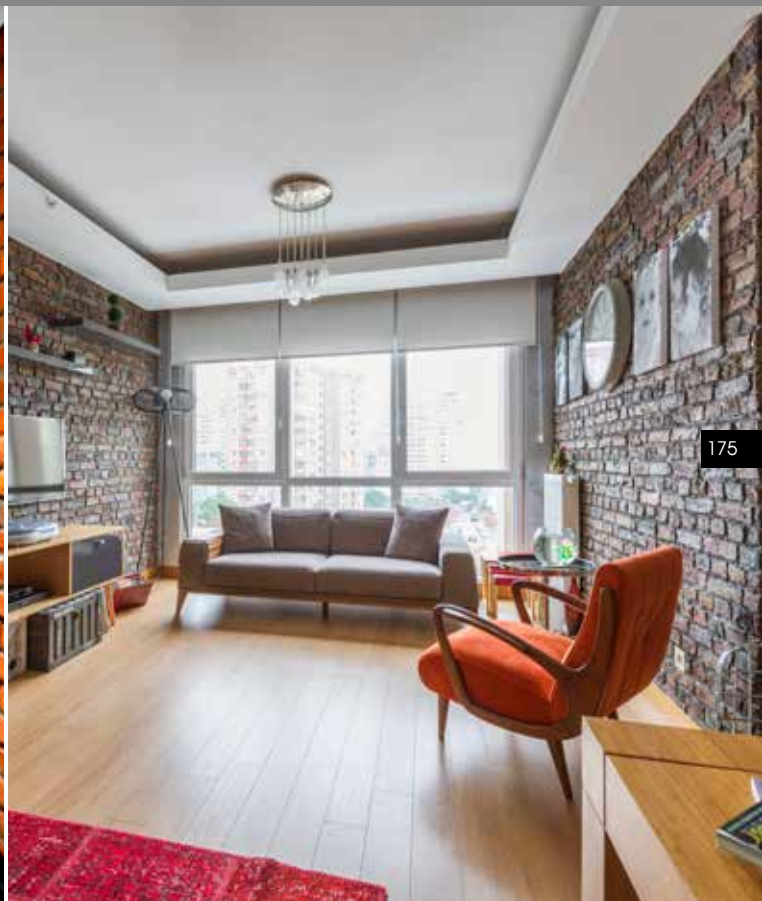


# REFERENCES



174



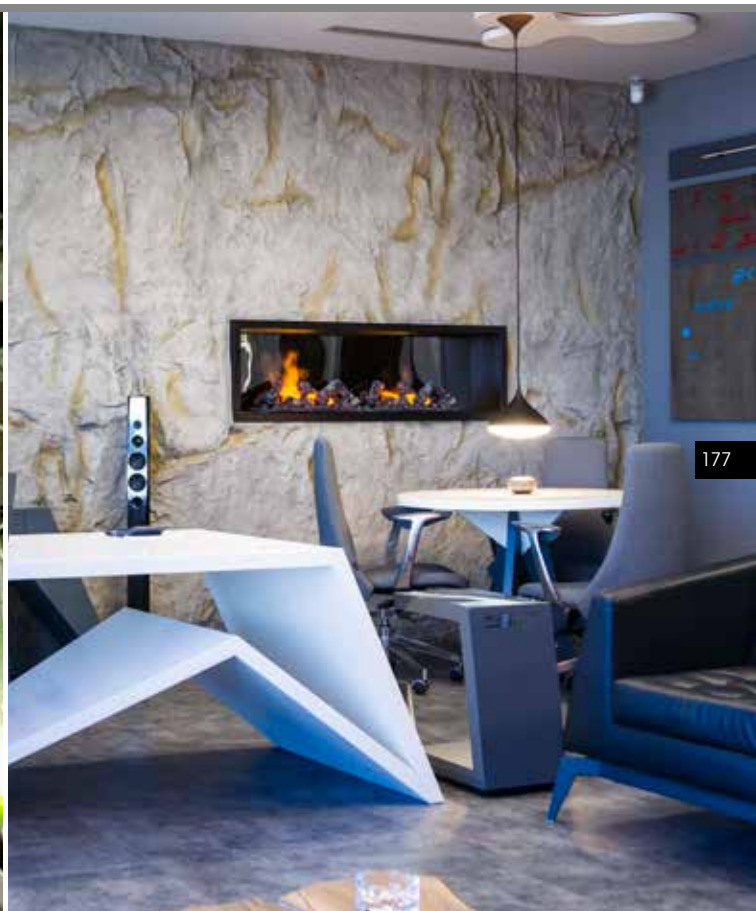


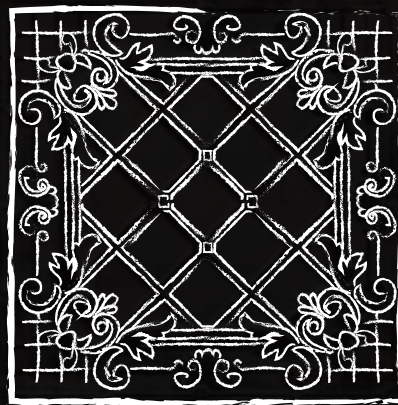
# REFERENCES

176









KAROART®  
ETHNIC VINTAGE



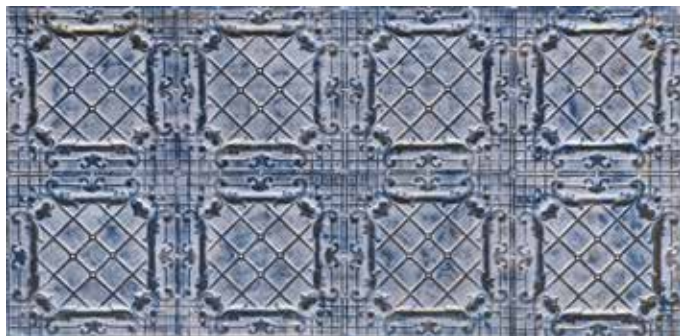
**We are bringing the traces of the past into your spaces...**

Inspired by culture, history and a noble origin, “**Karoart**” patterns offer an international sense of aesthetics. Karoart series offer 13 models and more than 100 color combinations to fill your spaces with luxury, nobility, grandeur, trust, solidity, generosity and a feeling of history, with light-shadow games that emerge from their patterns, textures and three-dimensional appearance.





# MARGAUX



h: 123 cm



w: 246 cm

182



Oxyd Blanc  
KA-15981



Crème D'or  
KA-15793



Blanc Azuré  
KA-15781



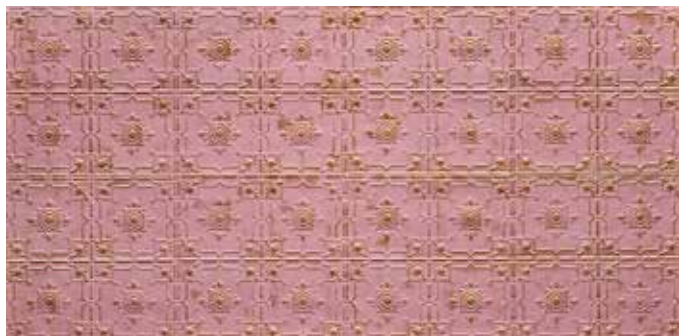
Bonamy  
KA-15451



Rosé Noir  
KA-15871



# ARIETTA



h: 124 cm



w: 247 cm

184



Rose D'or  
KA-22874



Bonamy  
KA-22451



Feu Vert D'or  
KA-22971



Gris D'or  
KA-22773



Noir Bronze  
KA-22673









# BOIS



h: 123 cm



w: 246 cm

188



Crème D'or  
KA-12793

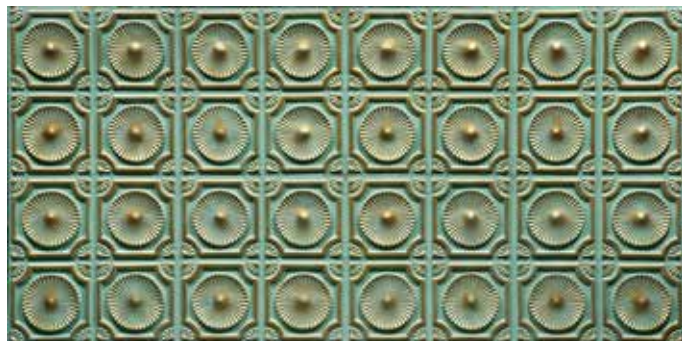


Noir Bronze  
KA-12673



Foncé Bronze  
KA-12693

# VERMONT



h: 118 cm



w: 238 cm



Crème D'or  
KA-18793



Noir Bronze  
KA-18673



Foncé D'or  
KA-18694



Azuré Bronze  
KA-18893



Feu Vert D'or  
KA-18971





# DAISY



h: 123 cm



w: 246 cm

192



Oxyd  
KA-17128



Foncé D'or  
KA-17694



Crème D'or  
KA-17793



Anthracite Bronze  
KA-17682





# BRODERIE



h: 124 cm



w: 247 cm

194



Noir Bronze  
KA-19673



Crème D'or  
KA-19793



Foncé D'or  
KA-19694

# EPICURE



h: 120 cm



w: 241 cm



Dijon  
KA-16452



Noir Bronze  
KA-16976



Chambéry  
KA-16457



Foncé D'or  
KA-16694



Rosé Pol Azuré  
KA-16873



Anthracite Argent  
KA-16683



Crème D'or  
KA-16793





# VERSAILLES



h: 123 cm



w: 244 cm

198



Blanc D'or  
KA-21782



Feu Vert D'or  
KA-21971



Moredoré Noir  
KA-21986



Dijon Blanc  
KA-21785



Bonamy  
KA-21792



Rosé D'or  
KA-21874



Crème Foncé  
KA-21791



# GRENIER

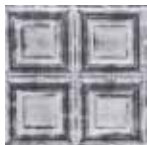


h: 122 cm



w: 246 cm

200



Bonamy  
KA-20451



Oxyd Blanc  
KA-20981



Oxyd  
KA-20128



Blanc D'or Noir  
KA-20783









# PLAFONT



h: 123 cm



w: 246 cm

204



Noir D'or  
KA-11674



Bonamy  
KA-11451



Noir Blanc  
KA-11671



Anthracite Bronze  
KA-11682



# FLORENZ



h: 123 cm



w: 245 cm

206



Foncé Bronze  
KA-13693



Noir D'or  
KA-13674



Gris Blanc  
KA-13771

# FONTENAY



h: 120 cm



w: 240 cm



Noir Bronze  
KA-14673

Noir Argent  
KA-14675

Bonamy  
KA-14451

# VICTORIAN



h: 124 cm



w: 247 cm

208



Noir Bronze | KA-23673



Bonamy | KA-23451



Oxyd | KA-23128



Blanc D'or | KA-23782



Foncé Blanc | KA-23692



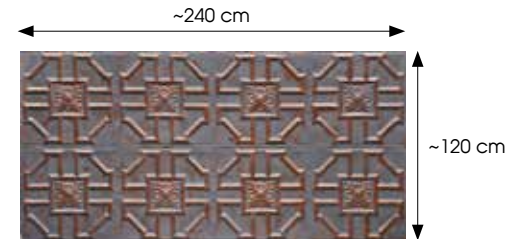
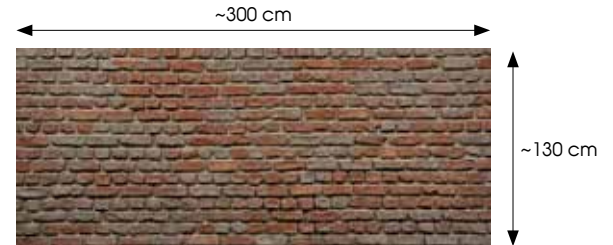


# PRODUCT ADVANTAGES

With its lightweight structure, its versatile products that can be easily applied to all interior and exterior areas with the exception of floors and its design infrastructure that harmonizes with different styles, Artstone has become a favorite brand in decoration sector.

- Artstone resembles to natural stone in its appearance and texture.
- It gives the exact same effect as desired.
- It can be easily applied to any surface when plastering is completed.
- It eliminates extra costs such as painting and insulation.
- Comparing to natural stone, it is more practical to install an installation times are greatly reduced.
- It is not affected by water and humidity.
- It can be easily applied to surfaces previously damaged by these conditions and it eliminates such problems.
- It eliminates unfavorable factors such as regional breaks and fragmentation and joint gaps which often occur in natural stone.
- It can be mounted on any surface. It does not affect the static, and puts virtually no extra weight on the application surface.
- In addition, the costs of disassembly are minimized since it is easy to dismount.
- It can be drilled and cut.
- Any decorative material can be hung on it.
- By forming columns and arches from profiles, you can create partition walls, fireplaces, vaults and etc. on any desired surface.
- It is very simple to install with screws and dowels. It is a practical and impressive solution that saves construction time - important for companies like Hotels, SPA Centers, Cafes, Restaurants and Stores that often need decorative modifications.
- It does not harm the surfaces it is applied to, except for the screw holes.
- It does not cause any construction dirt (sand, cement etc.) and does not harm the environment.
- It does not require construction and building permission.
- Different shapes can be applied due to its flexible structure.
- In proportion to natural stone's m<sup>2</sup> weight, it is 10 times lighter.
- Comparing to natural stone, it does not have a possibility to grow bacteria.
- It is easy to clean, can be washed and wiped.

- Spaces and custom designs, which are very hard to be applied with natural stone, can easily look and feel like natural stone, wood or concrete thanks to Artstone®.
- On surfaces, where stone paving is risky and costly such as ceilings, depending on the ceiling structure; it can either be mounted directly to the ceiling or be installed on the carcass built on the vaulted ceiling.
- You can apply custom colors and patina processes on Artstone products of your personal choice or corporate identity from the custom, non-standard RAL catalog.
- Panel measurements stated in the catalogue may vary up to  $\pm 1\%$ .



ORIGINAL PRODUCT SUPPLY



NON-COMBUSTIBLE



# SPECIFICATIONS

- They are panel systems that are produced of fiberglass, ecological resin (isophthalic, low in stress, 1st class polyester) and natural stone dust and prepared with special coloring techniques.
- **Artstone®** has a real stone-like feel and look. It feels like natural stone.
- It is not PVC, MDF or NATURAL STONE.
- **Artstone®** panels is in «A2 s1 d0» class of non-combustible criteria (reaction of construction products to fire and fire resistance performance) in Euroclass TS EN 13501-1 classification. With reference to technical data, there is no deformation and deformation between -40 and +120°C degrees. Its thermal resistance is 800 °C. All product groups have «non-flammability feature» as a standard. Some of our models are optionally produced in «Class B». The weight of our panels per m<sup>2</sup> and their thickness vary depending on the model.
- While their weight varies between 6-10 kg/m<sup>2</sup>, their thickness is between 7 mm and 12 mm, their depth range from 1 to 4 cm.
- Panel dimensions are; Artstone series; ~130x300 cm. - Karoart Series ~120x240 cm. Artstone covers ~ 4 m<sup>2</sup> space, Karoart covers ~ 3 m<sup>2</sup> space
- Its sound insulation index is 40db. In terms of the sound level in a space, it insulates 100hz sound on average.
- It provides ultraviolet protection and is not affected by harmful rays.
- It is thin, yet resistant to damages and shock absorbing.
- Its color does not fade. We are solution partners with «JOTUN», which is the world's leading brand in terms of paint quality and fastness guarantee.
- It is not affected by water and humidity.
- It has many alternatives in any natural stone, concrete, tile or brick, stone and oxide look.
- It can be cut to the desired dimensions. It can be applied to any wall or ceiling surface using screws and dowels after its rough construction is completed.
- It does not include any carcinogenic materials. It has been certified that it is not harmful to human health or environment.
- Since original stone dust is used in production instead of synthetic paint, the color of panels might differ as it does in natural stone.
- Due to its lightweight, it can be mounted on portable stands. It can be shaped due to its flexible structure. It can be applied to cylindrical spaces with 50 cm dimensions, which is the lower limit. (The lower limit varies depending on the type of product.)
- It is suitable for exteriors.
- Since a special mastic filling that contains stone dust is used on joints and junctions, panels have the pattern integrity, not pattern incoherence.
- Each model has its own touch-up paints. During touch-up process, the pattern is applied on junction points and screws, then joint paint is applied and a solid look is acquired.

# WALL COVERING INSTALLATION



1. Measuring the application area



2. Scaling of the panel to be applied



3- Cutting the panel by angle-grander



4-a) Assembling by nails



4-b) Assembling by screws



5- Leaving a space by 1cm between two panels



6- Preparing the assembly putty



7- Covering the spaces by assembly putty by using a putty knife



8- Whiping into shape by brush and putty knife



9- Waiting for drying for assembly



10- Re-touch painting by airbrush



11- Installation finished after drying

# OUR DIFFERENCES

## PRODUCT QUALITY

### A) RAW MATERIAL

- “Isophthalic polyester” used in the mix is the primary distinctive feature of Artstone panel systems.
- Flexural-tensile strength and impact resistance values known as Barcol hardness enables showing a better performance comparing to general-purpose polyesters.
- Artstone panels, which are suitable for EXTERIOR use due to their strength against acidic environments, sudden changes of temperature and high temperature endurance, show a better performance when compared to its competitors.
- Artstone panels have the same characteristics of the raw material used in manufacture of wind turbines, planes, yachts and boats.
- It is hygienic and suitable for food contact.
- It does not contain any raw material that is hazardous on human health.

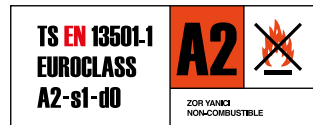
The panel does not bend or pull-off in hot and cold environments, especially in outside air conditions. This is the most common problem of panels that are not Artstone.

### B) NON-COMBUSTIBLE

All models of Artstone panels have “**A2 s1 d0 NON-COMBUSTIBLE CERTIFICATE**”. This is the

main required qualification for projects that are being constructed and renovated in today's conditions. The fact that companies in composite covering sector with **A2 s1 d0**

non-combustible certified products is very limited is another reason to prefer Artstone. According to EU regulations, our panels successfully passed the fire test **Euroclass TS EN 13501-1** (reaction of construction products to fire and fire resistance performance).



### C) PRODUCT THICKNESS & RESISTANCE

Production of Artstone panels in a certain thickness brings maximum resistance along. When equivalent or copied substandard products are considered; thinner panels produced with no resistance to lower the product cost cause problems in the long term. It has been observed that producing panels in substandard thickness causes breakages, cracks and bending. In terms of being in accordance with “technical specifications”, Artstone keeps its thickness standard between 7 and 12 mm. The panel's flexural strength has been calculated as 319 N/mm<sup>2</sup> and modulus of elasticity as 40000 N/mm<sup>2</sup> as a result of measurements. These values constitute the required standard values. According to TS EN 59 standards, Barcol hardness value is determined as 52. This value is 44 for glass reinforced products, which is above the anticipated hardness. It is important to know that values under the limit are considered as “non-suitability”.



#### D) IMPACT RESISTANCE

In the impact resistance test done according to TS EN ISO 179-1 standards, Artstone panel's impact resistance has been calculated as 30kj/m<sup>2</sup>. Glass fiber composites' Charpy impact resistance value is higher than 25.45kj/m<sup>2</sup> according to DIN ISO179 standards. This is especially important for unfavorable weather conditions. Resistance of Artstone panels against any possible impact and shock is very high. In conclusion, our product has "shock absorber" feature.

#### E) THE MOST NATURAL LOOK

If a product is a panel with natural stone look and structure, it does not mean that it has a natural look. 90% Artstone's production process occurs technologically, while 10% occurs with hand-workmanship. This brings the exact creation of the desired structure and look with it. "Natural look", which is obtained through color combinations with special inorganic pigments for the produced panels and special painting techniques performed afterwards, is another distinctive feature of Artstone panels.



**NOT EVERY WALL PANEL IS "ARTSTONE".**

#### F) HEAT RESISTANCE

Artstone has a wide interval range in terms of heat resistance. According to the tests performed under ASTM C 666 standards, it has been observed that there is no deterioration or deformation in frost resistance test and no loss of weight. In determination of resistance to water and moisture, expansion-tensile values' accordance with technical specifications and also ASTM E 1069 temperature resistance limit, it has been observed that the product is resistant up to 800°C.

#### G) USE OF HIGH-QUALITY PAINTS

Fastness guarantee of façades up to 20 years with our solution partnership with the world's leading brand "JOTUN", which proved itself in the sector, is another distinctive feature of Artstone panels.



# OUR DIFFERENCES

## GUARANTEE PERIODS

### A) PRODUCT GUARANTEE

Artstone panels, which have "15-year product guarantee period", take place near the top among brands of composite sector in Turkey. Artstone gives a 15-year guarantee to the person or company that purchases the product as of the invoice date the product is purchased. Under normal terms of use, Artstone products are guaranteed against any problems that might arise from the production. Structural deteriorations such as superficial cracks, rotting and breakage are under the guarantee. In case that there is an unusual deterioration in the product during the guarantee period, it can be reported with a written petition and a photo of the impaired part by agreeing with an Artstone authority. If it is deemed appropriate as a result of the examinations, Artstone is responsible for replacing only the damaged part with a new one or refunding the individual or company as only the damaged product's panel value.

### B) INSTALLATION GUARANTEE

With its large, professional and trained staff, Artstone is offering a "5-Year Installation Guarantee" on product applications. Our company, which shows its difference with its sensitivity on the starting and finishing date of projects, is making its guarantee official with reciprocal sales agreements.

### SUPERIORITY IN INSTALLATION

With foreign-oriented installation teams within our body, we provide services to domestic & foreign retail and project-based requests with optimal deadlines and our broad professional staff.

In addition, at the created training academy, thanks to the product training provided by experienced Artstone installation supervisors and field training supported by practical applications done in the worksite, training service is provided to candidate teams that would like to receive training. Installation is performed with "smart screw" and "nail pounding"

methods, without compromising on the quality of installation equipment. Our solution partnership with the world's leading brand "HILTI" continues with the awareness that certain solution in panel application is directly proportional to equipment quality.

Use of certified consumables is another important factor that affects the installation quality. The fact that the mastic filling used to put additional spaces together during product application is elastic is a feature that cancels out the possibility of crackage, which arises from natural conditions on the exterior use in addition to interior applications and can occur in time.



### CUSTOM APPLICATIONS

A rich color chart we present thanks to our solution partnership with world's leading brand JOTUN and unlimited color combinations that can be applied to the desired panel structure, and also aging structures obtained in the product's visual effect with "special patina" methods, we can apply "custom colors and different structures" and customize the product.

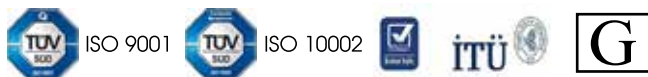
### DELIVERY NETWORK

With "Artstone Decorative Wall Panels", which are all designed and produced in Turkey, the optimum level in stock management is maintained. In parallel with the fact that trade is rapidly expanding, Artstone is presenting "fast and optimum solutions" to its customers with "50.000 m<sup>2</sup> ready stock with 90+ different models". Artstone's goal at this point is to respond to the customer's project regardless of their request and as fast as possible without keeping them wait.



## CERTIFIED PRODUCTS

The main reason that Artstone is taking the product quality to high standards and has international standards is because it gets the necessary tests for panels done both at home and abroad by prestigious institutions. It is very important for our company that our quality standards are determined by significant institutions such as **TÜV**, **INTERTEK**, **ITÜ**.



## EXTENSIVE REFERENCES

Artstone has carried out more than 9.000+ projects since 2005, both at home and abroad. We have successfully taken the most important brands of almost all sectors into our references; especially from housing, hotels, restaurants, health, public sector and private businesses. It gives us happiness that these numbers are increasing as we serve to more different masses day after day.

## R&D

Tracking the changing world and trends instantly, Artstone is constantly developing new models with its R&D team and aiming to present the best solutions to its customers. By its brand vision, the company is in a constant renovation related to the current trends. In this way, it is adding value to walls with its new solutions, contributing to the sector's future vision with the products it develops and while developing itself it is also inspiring competitors to develop themselves.

## ORIGINAL PRODUCT SUPPLY

The back surface of all our panels is covered with craft paper that has the special Artstone logo on it. All products have "ID numbers" and "custom holographic" stickers on the back surface that indicate that the product is original. All panel formatted products that do not have this feature are copied products.



## CUSTOMER SATISFACTION

Making no compromises on product quality and its vision since its foundation, Artstone presents top-quality service to its customers with the most advantageous prices and works with all its power to keep their satisfaction at the maximum level and it is creating loyal customers thanks to its continuous standard product and application service.

# ARTSTONE AT A GLANCE

**PRODUCTION CAPACITY** 250.000 SQM/YEAR

---

**MAIN PRODUCT RANGE** DECORATIVE PANELS FOR; WALL, CEILING, FACADE

---

**INNOVATIVE, PIONEER** SOLUTIONS THAT CREATE TRENDS

---

MORE THAN 50 EMPLOYEES  
2 CENTRAL SHOWROOMS  
25 DEALERS  
90+ DIFFERENT MODELS  
1.000+ COLOR COMBINATIONS  
12.500+ COMPLETED PROJECTS

**PRODUCTION AREA** 9.500 M<sup>2</sup>

---

1ST IN THE SECTOR IN TERMS OF MARKET DOMINANCE

**AS A RESULT OF COSTUMER SATISFACTION SURVEYS** 95% CUSTOMER SATISFACTION

---

EXPORT TO 50+ COUNTRIES



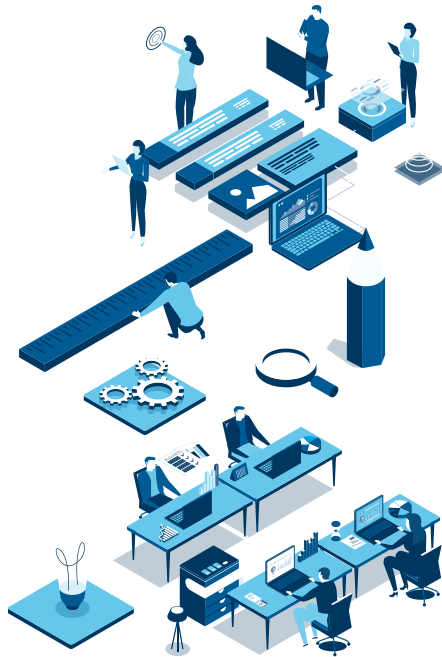


# ARTSTONE PROJECT APPROACH

BUSINESS PROCESS

PLANNING

VISION AND STRATEGY



## 1 Vision & Strategy DEFINITION OF GOALS AND SCOPE OF PROJECT

- Concept Analysis
- Changing Needs
- Budgeting
- Risk Analysis

## 2 Planning REALISATION OF PROJECT

- Programme Planning
- Project and Construction Management
- Production and Purchasing Management
- Quality Management

## 3 Business Process REGULATED COMMISSIONING AND AFTERCARE

- Commissioning
- Aftercare
- Warranty
- Quality Assurance

# SERVICE NETWORK



With its logistics and purchasing services at home and abroad, Artstone provides timeless surfaces with long product life guarantee.

The company started its journey with the goal of creating “natural spaces to be used safely for years” by expanding the areas of use of Artstone products, which are produced in its own factory that has advanced technology in international standards with completely domestic investments. In this direction, the company has specified expanding panel wall awareness in construction and decorative products sectors and enhancing the quality of products and services as its mission.

Our market-leading company is focusing on quality and gives this criteria prominence. Accordingly, we are producing our products, which are in “A2 s1 d0 Non-Combustible Class” and a first in its sector, in conformity with the quality norms and standards specified by Germany-based “TÜV-SÜD”.

ARTSTONE CONTINUES  
TO BE PARTNERS  
IN MANY PROJECTS IN  
**AMERICA, EUROPE, RUSSIA  
AND VARIOUS COUNTRIES OF  
ASIA AND AFRICA.**

222



## EUROPE

### TURKEY (HQ)

GERMANY  
ALBANIA  
AUSTRIA  
AZERBAIJAN  
BELGIUM  
BULGARIA  
CROATIA  
CZECH REPUBLIC  
DENMARK  
ENGLAND  
FRANCE  
GREECE  
GEORGIA  
HUNGARY  
ITALY  
KAZAKHSTAN  
KOSOVO  
MACEDONIA  
NORWAY  
POLAND  
ROMANIA  
SERBIA  
SLOVAKIA  
SWITZERLAND  
THE NETHERLANDS  
UKRAINE

## AFRICA

ANGOLA  
ETHIOPIA  
KENYA  
MADAGASCAR  
MAURITIUS  
NIGERIA

## MIDDLE EAST

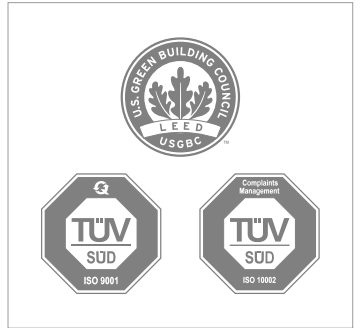
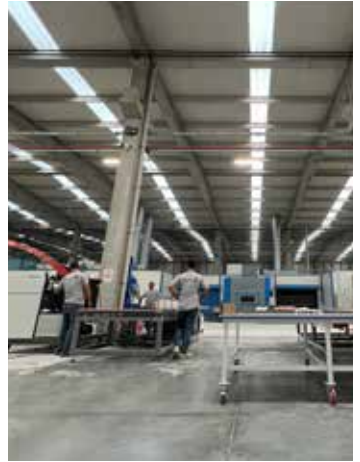
BAHRAIN  
IRAQ  
ISRAEL  
KUWAIT  
LEBANON  
OMAN  
PALESTINE  
SAUDI ARABIA  
UAE

## ASIA

CHINA  
HONG KONG  
INDIA  
PAKISTAN  
RUSSIA  
SOUTH KOREA  
TAIWAN







All written and visual materials (articles, photographs, drawings, work photos and website codes) presented in this catalogue belong to Artstone Panel Systems Inc. and its rightful owners. These content are protected by applicable intellectual property, copyright, trademark, patent and or other related laws. Reproduction, distribution, adaptation, arrangement, publishing to the public, transmission, transfer, rental, sale or illegal use of the above mentioned information without the written permission of Artstone Panel Systems Inc. is prohibited. In the event of a violation of an intellectual property right, the violator shall assume all legal liability and retain the right to commence legal proceedings by Artstone Panel Systems Inc. or the rightful owner thereof.

artstone® 

THE ART OF  
COVERINGS

artstone®



THE ART OF  
COVERINGS

Artstone Panel Sistemleri A.Ş.

**Showroom:** Barbaros Bulvarı No: 24/B 34349 Balmumcu, Beşiktaş | İstanbul | **Türkiye**  
**Factory - HQ:** Velimeşe OSB Mah. 252 Sk. No: 28/1A 59930 Ergene | Tekirdağ | **Türkiye**  
T. +90 444 4 278 | T2. +90 212 221 11 13

info@artstone.com | [artstone.com](https://www.artstone.com)

     /artstonepanel

